

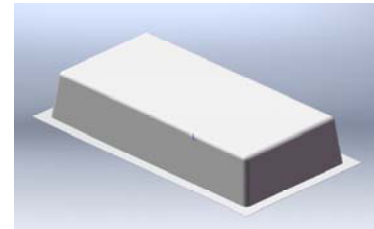


Andex Industries  
 1911 Fourth Avenue North  
 P.O. Box 887  
 Escanaba, MI 49829-0887  
 800/338-9882 : Fax 906/786-3133  
[www.Andex.Net](http://www.Andex.Net)

## ANDEX STOCK-COMBO BLISTERS

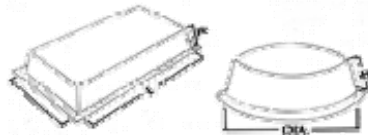
Eliminate the need to invest in custom designed tooling when one of our existing stock molds are appropriate.

- No tooling cost. Zero. Zilch. Nada.
- Available in versatile square, round, and rectangular shapes.
- Low, moderate, to high quantities using the cost effective COMBO-PAC Blister Runs.
- Ask about our Combo Blister Card program.



Purchase both your **blisters & cards** from Andex for a [guaranteed fit and seal.](#)

### Measuring A Blister



1. Length and width measurements are made at the inside open edge of the blister's base, from one corner to the next, excluding the flange. The third dimension is always the height.

2. Blister's sides taper inward at a draft angle of at least 7 degrees to 10 degrees, making its inside top dimensions slightly smaller than its base. *(note: Samples are available and should be requested to establish proper fit with product being packaged.)*

3. To determine smallest possible card size, add at least twice the flange width plus 1/4" to blister dimensions. Allow additional space for graphics and hanger hole if required.

### **Andex - Expect Excellence for:**

**Blisters & Blister Cards**  
**Clamshells & Insert Cards**  
**Skin Board**  
**Specialty Printing & Thermoforming**

**New items are being added call for other available sizes!**

Dimensions	Flange	Mil	Stock Item #
<b>Rectangular &amp; Square</b>			
<b>Stock Combo : 1" to 2" Length</b>			
1 3/16 x 1 3/16 x 3/8	5/16	10 or 15	80613
1 5/16 x 1 1/8 x 1/8	1/4	10 or 15	80825
1 3/8 x 5/8 x 1/4	3/16	10 or 15	80666
1 1/2 x 3/4 x 5/8	5/16	10 or 15	80656
1 9/16 x 1 7/16 x 7/8	5/16	10 or 15	80720
1 5/8 x 3/4 x 3/16	3/16	10 or 15	80872
1 5/8 x 3/4 x 3/8	1/4	10 or 15	80614
1 5/8 x 1 5/8 x 7/16	1/4	10 or 15	80846
1 3/4 x 1 5/8 x 3/4	3/8	10 or 15	80814
1 3/4 x 1 3/4 x 1 3/16	5/16	10 or 15	80654
1 7/8 x 1 x 3/4	3/8	10 or 15	80647
<b>Stock Combo : 2" to 3" Length</b>			
2 1/8 x 1 3/4 x 7/8	5/16	10 or 15	80744
2 3/16 x 1 1/4 x 1/2	3/8	10 or 15	80826
2 3/16 x 2 1/8 x 5/8	5/16	10 or 15	80710
2 5/16 x 2 1/16 x 7/16	1/4	10 or 15	80921
2 1/2 x 7/8 x 11/16	3/8	10 or 15	80709
2 1/2 x 1 1/4 x 5/8	5/16	10 or 15	80306
2 1/2 x 1 1/2 x 1	5/16	10 or 15	80887
2 5/8 x 3/4 x 1/2	1/4	10 or 15	80651
2 3/4 x 1 x 1/2	1/4	10 or 15	80646
2 3/4 x 2 3/4 x 1	5/16	10 or 15	80888
2 7/8 x 3/4 x 3/4	5/16	10 or 15	80838
2 7/8 x 1 5/8 x 5/8	5/16	10 or 15	80112
2 7/8 x 2 1/8 x 7/32	1/4	10 or 15	80757
2 15/16 x 1 1/2 x 5/8	1/4	10 or 15	80703
<b>Stock Combo : 3" to 4" Length</b>			
3 x 1 x 3/16	1/4	10 or 15	80657
3 x 1 x 5/8	5/16	10 or 15	80820
3 x 1 x 3/4	3/8	10 or 15	80910
3 x 1 3/16 x 1	5/16	10 or 15	80274
3 x 2 5/16 x 1/2	1/4	10 or 15	80701
3 1/8 x 2 1/4 x 3/8	1/4	10 or 15	80718
3 1/8 x 3 1/8 x 3/4	3/8	10 or 15	80775
3 1/4 x 1 3/4 x 3/4	3/8	10 or 15	80742

**New items are being added call for other available sizes!**

Dimensions	Flange	Mil	Stock Item #
3 1/4 x 1 3/4 x 1 1/8	5/16	10 or 15	80912
3 1/2 x 1 x 1/2	1/4	10 or 15	80610
3 1/2 x 1 x 3/4	3/8	10 or 15	80663
3 1/2 x 1 1/2 x 1/2	1/4	10 or 15	80782
3 1/2 x 2 x 1 1/2	5/16	15 only	80889
3 1/2 x 2 1/2 x 7/8	3/8	10 or 15	80922
3 1/2 x 3 1/8 x 1 1/2	3/8	15 only	80605
3 5/8 x 2 x 1	5/16	10 or 15	80617
3 11/16 x 3 7/16 x 1 5/16	5/16	10 or 15	80615
3 3/4 x 2 1/2 x 1 3/8	5/16	15 only	80652
<b>Stock Combo : 4" to 6" Length</b>			
4 x 1 x 1/2	1/4	10 or 15	80618
4 x 2 x 1 1/2	3/8	15 only	80890
4 x 2 1/2 x 1	3/8	10 or 15	80891
4 1/4 x 3 3/4 x 1	3/8	10 or 15	80915
4 1/2 x 1 3/4 x 1	5/16	10 or 15	80642
4 1/2 x 3 x 1	3/8	10 or 15	80892
4 5/8 x 1 7/8 x 3/8	3/8	10 or 15	80920
4 5/8 x 3 3/4 x 7/8	5/16	10 or 15	80919
4 3/4 x 1 1/8 x 3/4	3/8	10 or 15	80608
5 x 5/8 x 9/16	1/4	10 or 15	80864
5 x 1 1/2 x 3/4	3/8	10 or 15	80726
5 x 2 1/4 x 2 1/4	5/16	15 only	80585
5 x 3 x 1 1/2	3/8	15 only	80893
5 x 4 x 2	3/8	15 only	80894
5 1/4 x 2 x 3/4	3/8	10 or 15	80819
5 3/4 x 4 1/4 x 7/8	3/8	10 or 15	80661
5 1/2 x 2 x 1 1/4	5/16	10 or 15	80923
5 7/8 x 3/4 x 7/16	1/4	10 or 15	80857
<b>Stock Combo : Over 6" Length</b>			
6 x 2 x 1 1/2	3/8	15 only	80895
6 x 3 x 2	3/8	15 only	80896
6 3/8 x 1 x 1/2	1/4	10 or 15	80028
6 3/8 x 1 5/8 x 7/8	3/8	10 or 15	80636
6 3/4 x 9/16 x 9/16	5/16	10 or 15	80747
7 x 4 x 2	3/8	15 only	80897
7 1/2 x 1 x 3/8	1/4	10 or 15	80813

**New items are being added call for other available sizes!**

Dimensions	Flange	Mil	Stock Item #
7 7/8 x 2 x 1	3/8	10 or 15	80609
8 3/16 x 3 3/8 x 1 1/8	5/16	10 or 15	80417
9 3/8 x 4 11/16 x 5/8	3/8	10 or 15	80384
<b>Stock Combo : Round</b>			
1 3/4 Round x 3/8	5/16	10 or 15	80650
1 3/4 Round x 1	1/4	10 or 15	80619
1 13/16 Round x 5/8	5/16	10 or 15	80604
2 1/4 Round x 1/2	1/4	10 or 15	80667
2 1/2 Round x 1	5/16	10 or 15	80898
2 5/8 Round x 5/8	1/4	10 or 15	80655
3 Round x 1/2	1/4	10 or 15	80616
3 Round x 7/8	5/16	10 or 15	80746
3 Round x 1 1/16	5/16	10 or 15	80727

